

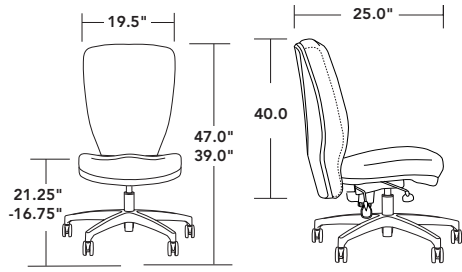


---

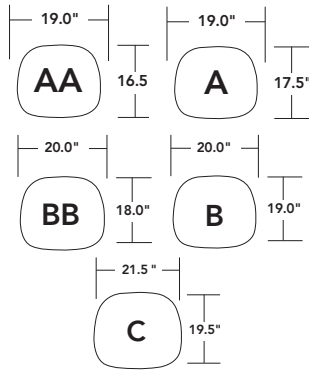
## ERGONOMIC TASK | STOOL

- fully modular offering three different seat and back sizes
- arm styles range from height adjustable to full function
- stool kit option available
- weight capacity up to 350lbs

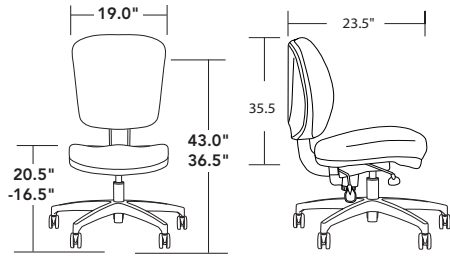
high back - 1805/2805/3005



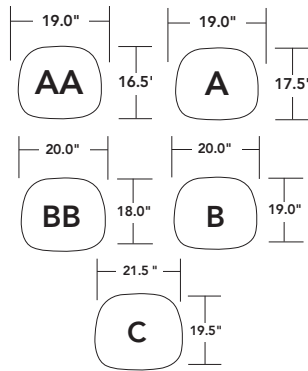
(chair shown has an A seat)



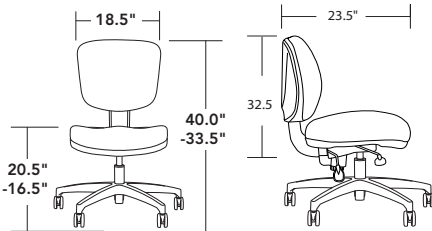
mid back - 1803/2803/3003



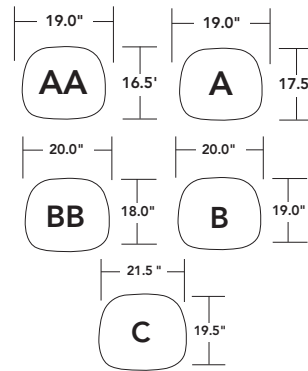
(chair shown has an A seat)



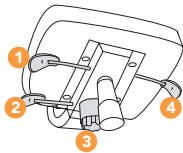
low back - 1801/2801/3001



(chair shown has an A seat)



controls



**-3C**  
active back control

use for: task | conference seating

1. seat height adjustment
2. back rest angle
3. back/recline tension adjustment
4. option: seat slider -12SS (range: 2")

weight capacity: 350 lbs

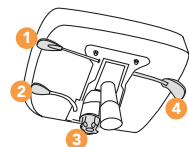


**-5C**  
advanced ergo control

use for: heavy duty task seating

1. seat height adjustment
2. back rest angle
3. back/recline tension adjustment
4. five position tilt lock (6° forward - 3° back)
5. option: Seat slider -12SS (range: 2")

weight capacity: 300 lbs



**-6C**  
bio-sync ergo control

use for: task seating

1. seat height adjustment
2. back rest angle
3. back/recline tension adjustment
4. option: seat slider -12SS (range: 2")

note: seat and back move at 2:1 ratio

weight capacity: 300 lbs

arms



**-10A**  
adjustable height straight upright



**-18A**  
full function



**-39A**  
adjustable height, rollback arm

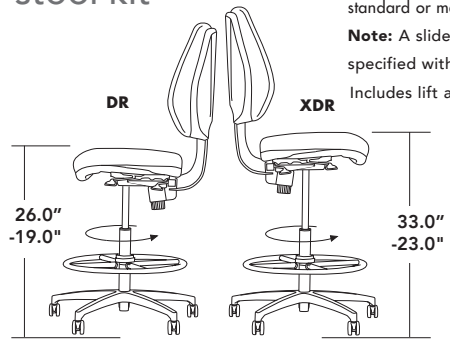


**-51A/52A/53A**  
black, white or polished adjustable height arm

stool kit

Stool kit can only be used on standard or medium size seat.

Note: A slider can not be specified with a stool kit. Includes lift and a footing.



bases



addition options (full list available in price book)

SUFFIX	DESCRIPTION
<b>-PTT</b>	AA or BB petite seat (-1.0" depth)
<b>-12SS</b>	seat slide (N/A on 11DR, 11XDR)
<b>-5</b>	standard cap: 10A, 18A, 39A
<b>-18S</b>	standard cap: 51A, 52A, 53A
<b>-17AB</b>	width adjustment bracket: 51A, 52A, 53A
<b>-18AB</b>	width adjustment bracket: 10A
<b>-21TB133T</b>	TB133 fire rated products
<b>-22UBF</b>	upholstered fabric back shell
<b>-22UBL</b>	upholstered leather back shell
<b>-16HP</b>	standard black carpet caster
<b>-16SCG</b>	gray hard floor caster
<b>-16GL</b>	black glides
<b>-11DR</b>	tall stool kit (only on -3C, N/A C seat)
<b>-11XDR</b>	extra tall stool kit (only on -3C, N/A C seat)
<b>-12LUM</b>	mechanical lumbar
<b>-ESD</b>	electrostatic discharge